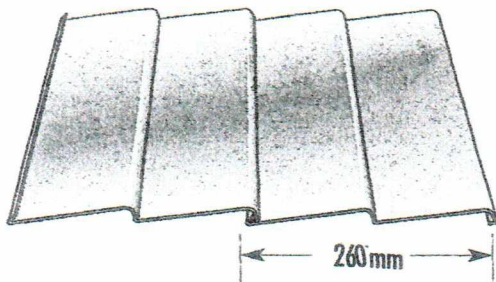


SPECIFICATIONS

Durasteel Weatherboards



Description and Applications:

Weatherboard Panel is an attractive durable system of interlocking panels incorporating completely concealed fixings, plus a versatile range of accessory trims. It is admirably suited to a wide range of uses including fascias, infill panels, wall claddings, screens and fences. Weatherboard Panel may be fixed horizontally or vertically in internal or external locations.

Material specifications.

WEATHERBOARD PANEL	Zincalume®	Colorbond®	
Kg Mass / Linear Metre	1.08	1.10	1000 / (Lm/Tonne)
Kg Mass / Metre² (cover)	4.08	4.15	1000 / (Lm Mass/260)
Base Metal Thickness	0.40	0.42	BMT
Total Coated Thickness	0.47		TCT
Tensile Strength	6550		
Coating Class	AZ150 (150g/m²)		
Tolerance	Sheet Length ± 10mm		
Thermal Expansion	2.9mm Average per 5 metre at 50°C change.		

FIXING

1. If fixing from a point, rivet panel to soaker flashing.
2. If fixing from a straight edge, use starter clips on the first sheet.
3. (Note:) Footmould may be required in some applications.
4. Hook the second panel into the top of panel one and fix stud work with fixing clips at each stud (600mm maximum centres).
5. Repeat step 4 until completed. Cut each sheet on edge to fix apex if required.
6. Fix flashings as required.

* Please note flashings shown are indicative. Actual site measurements are essential for neat finish.

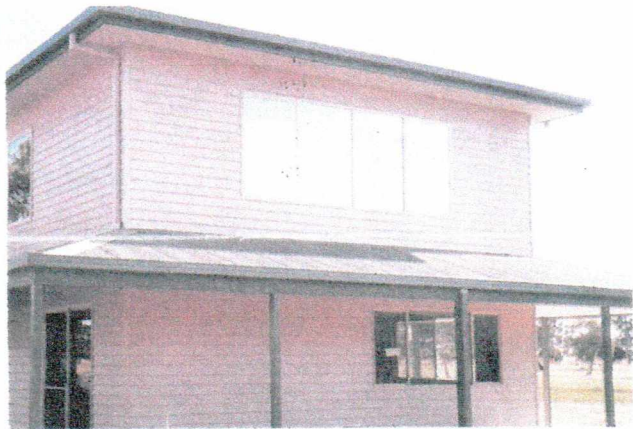
MATERIAL AND FINISH

Weatherboard Panel is available in a new light weight high strength zinc coated steel or in proven Colorbond® finish.

COVER AND SPAN

Each panel covers 260mm continuous lengths. Maximum recommended span is 600mm. For lengths over 6 metres contact our Sales Office.

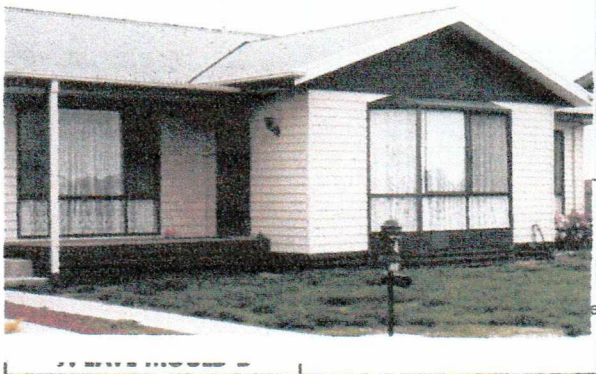
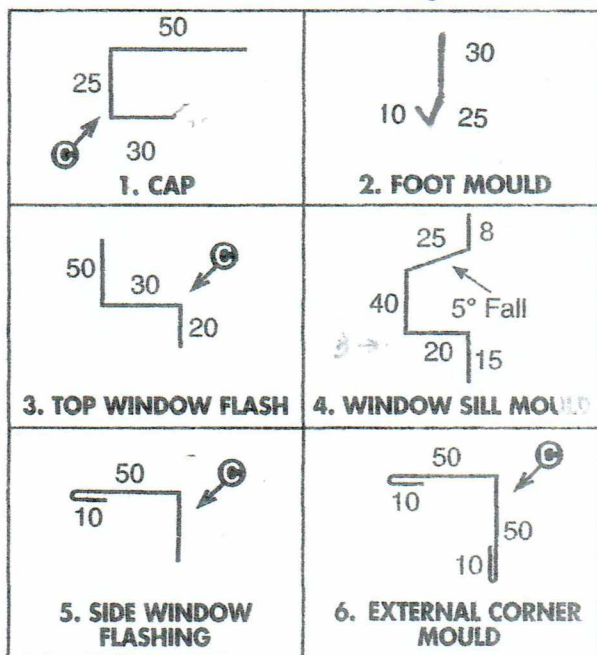
NOTE - Tolerance for length is ± 5mm



ACCESSORIES

It is best that flashings are measured to order for each job to ensure a neat fit. Maximum length of flashings is 3.6 metres in standard colours of Colorbond®. All other colours are available P.O.A. based on volume.

Weatherboard Panel Flashings & Details:



Durasteel has a unique cyclone-proof forming and fixing system as glamorous as it is sensible, with astonishing durability.